

# TD-H Series

Selective Call Intercom System



For Commercial and Industrial Applications

# Features & Benefits

## • Variety of stations

Mix and match up to 25 stations to create the desired communication solution

## • Access control

Select up to 2 door stations to have entry security in addition to communication

## • Paging and talkback

Page individual zones or all zones at once, both with talkback capability

## • Internal communication

Call and receive calls from any connected master station (multi-talk paths allowed)

## • Handset page button

Prevent accidental paging with the strategic location of the page button (also used for door release)

## • Complements phone system

Improve communication with quick access paging, a feature telephones do not offer

## • Great for noisy environments

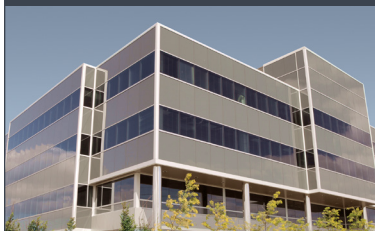
Use the system's speakers and amplifiers to produce loud and clear announcements in any environment

## • Reliable and designed to last

Install the system and have guaranteed trouble-free use for years to come!



# Ideal Applications



Offices



Retail Outlets



Warehouses



Industrial Facilities

# Components - Mix and match up to 25 stations

▶ A maximum of 2 door stations and 12 paging adaptors are allowed in a system configuration.

## Optional Door Stations – Install up to 2 (counts toward total capacity of 25 stations)



### AX-DM Audio Door Station

- Plastic chassis
- Mullion surface mount
- 6-5/16" H
- 1-11/16" W
- 7/8" D



### IF-DA Audio Door Station

- Plastic chassis
- Surface mount
- 5-1/8" H
- 3-7/8" W
- 1-1/8" D



### IE-JA Audio Door Station

- Stainless steel cover
- Flush mount
- Fits 2-gang box
- 4-1/2" H
- 4-9/16" W
- 2-1/2" D
- (back box depth)



### IE-SS/A Audio Door Station

- Stainless steel panel
- Flush mount
- Fits 2-gang box
- 4-3/4" H
- 4-3/4" W
- 2-1/2" D
- (back box depth)



### IE-SSR Audio Door Station

- Red mushroom call button
- Stainless steel panel
- Flush mount
- Fits 2-gang box
- 4-3/4" H
- 4-3/4" W
- 2-1/2" D
- (back box depth)



### DE-UR Door Station Adaptor

- Allows door station to be added for access control
- Activates door release
- 6-5/16" H
- 5-7/8" W
- 1-3/4" D

## Master Stations – Install up to 25 (up to 23 if using 2 door stations or up to 11 if using 2 door stations and 12 paging adaptors)



### TD-1H/B 1-Call Audio Master Station

- Handset for privacy



### TD-3H/B 3-Call Audio Master Station

- Handset for privacy



### TD-6H/B 6-Call Audio Master Station

- Handset for privacy



### TD-12H/B 12-Call Audio Master Station

- Handset for privacy



### TD-24H/B 24-Call Audio Master Station

- Handset for privacy

NOTE: TD-1H/B cannot be used for door answering.

Dimensions: 8-1/4" H (all) 3-15/16" W (all) 2-7/8" D (TD-nH/B / nHL n = 1, 3, 6, or 12) 3-1/4" D (TD-24H/B)

# Components - Mix and match up to 25 stations

▶ A maximum of 2 door stations and 12 paging adaptors are allowed in a system configuration.

**Paging Adaptors** – Install up to 12  
(counts toward total capacity of 25 stations and requires 1 paging amplifier per paging adaptor)



**PD-1**  
Zone Paging Adaptor  
2" H  
3-9/16" W  
5-7/16" D



**PD-2**  
Zone Paging /  
Talkback Adaptor  
2" H  
3-9/16" W  
5-7/16" D

**Paging Amplifiers** (1 required per paging adaptor)



**P30BGM**  
30W Paging Amplifier  
3-1/2" H 10-1/2" W 9-1/2" D



**DMA2120**  
120W Paging Amplifier  
4" H 10-3/4" W 11" D

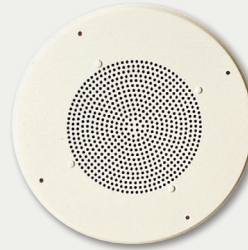
**Paging Speakers** – Install number of speakers needed (based on amplifier wattage)



**AH-16TN**  
Horn Speaker  
• 8Ω, 25/70V, 16W  
• Indoor or outdoor use  
• Surface mount  
Bell Diameter: 8-1/8"  
Depth: 9"



**AH-32TN**  
Horn Speaker  
• 25/70V, 32W  
• Indoor or outdoor use  
• Surface mount  
Bell Diameter: 8-1/8"  
Depth: 9"



**SP-2570N**  
Ceiling Speaker  
• 8Ω, 25/70V, 5W  
• Indoor use  
• Flush mount  
Diameter: 12-7/8"  
Baffle Diameter: 8"

**Power Supply**  
(1 required per system)

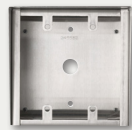


**PS-1225UL**  
12V DC  
Power Supply  
6-9/16" H  
3-9/16" W  
2-1/16" D

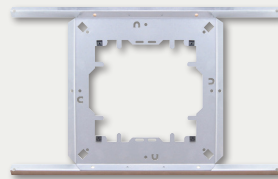
## Accessories



**HID-SS**  
Card Access Station with HID®  
ProxPoint® Plus Proximity Card Reader  
(requires a 3rd party host)



**SBX-2G**  
Surface Mount Box for  
IE-JA, IE-SS/A, or IE-SSR



**SSB-2**  
Ceiling Support  
Bracket for SP-2570N



**TDW-nA**  
Terminal Box  
for TD-nH/B  
(n=1, 3, 6, 12 or 24)



**RY-AC/A**  
External  
Signaling  
Relay

## Specifications

<b>Power Source</b>	12V DC - use PS-1225UL	<b>Communication</b>	Handset (full-duplex)
<b>Consumption</b>	Max. 70mA per station	<b>Door Release</b>	N/O 30V AC/DC, 1A (at DE-UR)
<b>Wire Type</b>	Door Station to DE-UR: 2 cond., overall shield - use Aiphone #822202 DE-UR to Master Station: 6 cond., overall shield - use Aiphone #822206 TD-1H/B / TD-1HL to another Master Station: 6 cond., overall shield - use Aiphone #822206 TD-3H/B / TD-3HL / TD-6H/B / TD-6HL: 10 cond., overall shield - use Aiphone #822210 TD-12H/B / TD-12HL / TD-24H/B*: 16 cond., non-shielded - use Aiphone #812216 *Two runs of 812216 are required for full functionality of the TD-24H/B		
<b>Wiring Distance</b>	Door Station to DE-UR: 500'(22AWG) 1,200'(18AWG) Between Masters: 2,000'(22AWG) 4,800'(18AWG)		

LOCAL AIPHONE EXPERTS ARE HERE TO HELP.  
**CONTACT US TODAY!**



TD-H Series Brochure

02 / 2017

Digital Copy

The information in this brochure is subject to change without notice.



ISO-14001  
Certified



Aiphone Co. Ltd.

ISO 9001:2008  
Certified



Aiphone Corp.

Deming  
Prize



Aiphone Co. Ltd.